



PUBLIC SERVICE *At It's Finest*

St. Charles County's citizens and businesses are served by some of the region's best public servants and award-winning agencies ensuring a vibrant and healthy community.

County Sheriff's Department

The St. Charles County Sheriff's Department, headquartered in O'Fallon, has a mission to provide safety and security to the unincorporated areas of the county. Commissioned personnel patrol, perform investigations, operate school resource offices, court services and civil processes. Civilian staff handle dispatching, crime scene investigations, lab analysis, court security and business office functions.



The department is also responsible for providing services to municipal police departments such as helicopter patrols, major crime scene investigations, bomb disposal, computer forensics, crime lab analysis, polygraph examination, and other specialized functions on request.

"The continued growth of St. Charles County is challenging to all government services and law enforcement is no exception," said Sheriff Tom Neer. "The St. Charles County Sheriff's Department accepts this challenge and strives to provide the level of service necessary to ensure the quality of life expected by our residents."

Along with regular patrol, local police services include detective bureaus, Neighborhood Watch, CrimeStoppers, crime prevention education, D.A.R.E.

Local Law Enforcement

“To Serve and Protect” is also the credo of municipal law enforcement agencies responsible for the incorporated areas of St. Charles County. Local communities operating their own police departments include St. Charles, St. Peters, O’Fallon, Wentzville, Lake Saint Louis and Cottleville.

Many departments hold membership in the Missouri Police Chief’s Association, the International Association of Chiefs of Police, and receive accreditation from the Commission on Accreditation for Law Enforcement Agencies (CALEA).

Along with regular patrol, local police services include detective bureaus, Neighborhood Watch, CrimeStoppers, crime prevention education, D.A.R.E. (Drug Abuse Resistance Education), Police Explorers for young adults considering a career in law enforcement, mounted police, canine units and school resource officers.

To provide enhanced public safety for the region, a state-of-the-art facility for Missouri Highway Patrol Troop C in Weldon Spring opened in 2008. The building includes administrative offices, a communications center, a memorial for fallen officers, an automotive service and storage area and an indoor shooting range.

Emergency Response

Emergency response services in St. Charles County are provided by six primary agencies staffed by hundreds of dedicated personnel and volunteers.

Emergency medical and ambulance transfer services are available throughout the community from the St. Charles County Ambulance District. Two ambulances are also operated by the St. Charles Fire Department within the city of St. Charles.

The O’Fallon Fire Protection District, the largest of the county’s emergency service agencies, provides services to more than 50,000 residents in a 67-square-mile area around O’Fallon.

The second largest, Wentzville Fire Protection District, serves more than 48-square miles around Wentzville.

Central County Fire and Rescue, a merger between the St. Charles County Volunteer Fire District and St. Peters Fire Protection District, provides emergency response services to St. Peters, St. Charles and surrounding areas.

The Lake Saint Louis Fire Protection District protects residents in and around Lake Saint Louis, serving an area of approximately seven square miles.

Several fire protection districts also exist to serve the communities of Augusta, Cottleville, Orchard Farm, Portage Des Sioux and West Alton.

To augment and support emergency response services, the Enhanced 9-1-1 System is used to route emergency calls to the correct location for immediate assistance and is managed by the County’s Emergency Management Agency (EMA). The agency also helps the area respond to major emergencies such as floods,

earthquakes, chemical spills and other disasters, and provides severe weather warnings.

Public Service – Emergency Response

In summer 2009, St. Charles County voters approved a \$36 million bond issue to fund a federally mandated upgrade in public safety communications. Based on lessons learned from the terrorist attacks of Sept. 11, 2001, these upgrades will allow local first responders from different agencies to communicate through shared frequencies, give dispatchers the ability to pinpoint the location of people making 911 cell phone calls, and replace outdated radio systems.

Social Service Agencies

Neighborly concern and an attitude of generosity are characteristics of the area with many non-profit organizations providing first-class social services to those in need in and around St. Charles County.

The Community Council of St. Charles County was created in 1954 to serve as a clearinghouse for the health and social welfare agencies within the county. It was a visionary plan for what was then a semi-rural county! As growth changes the needs of the area, the Community Council continues to help address the unmet needs of the community.

The United Way of Greater St. Louis, Inc assists thousands of people in 16 Missouri and Illinois Counties, including St. Charles County through both health and social service agencies. The local division of the Tri-County United Way serves



Fire fighters attend to a burning car

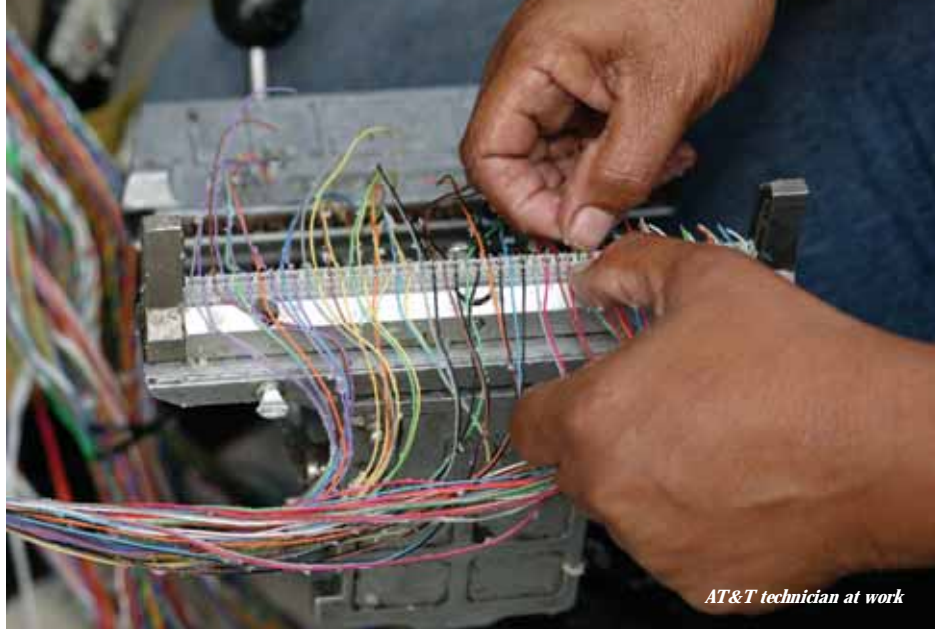
PUBLIC SERVICE *At It's Finest*

St. Charles, Lincoln and Warren counties. In 2009, the tri-county United Way exceeded its goal by raising more than \$3.1 million.

"The residents of this region are among the most generous in the nation," said John Glenn, vice president of the Tri-County United Way. "Despite being the 18th largest market, contributions to the United Way of Greater St. Louis ranks first in African-American giving, fifth in women's giving and sixth in overall giving."

For more than 30 years, United Services has been serving St. Charles County children with special needs. Nearly 250 special educators, preschool teachers, childcare workers and therapists lovingly deliver a variety of programs to address speech, language, motor, cognitive and behavioral skills through early intervention and special education. The agency's unique policy of inclusion brings together children both with and without special needs in the same classroom.

"The impact we have had on the community is tremendous," Executive



AT&T technician at work

Director Billy Collier said. "Prior to the formation of our agency, families who had young children with disabilities in St. Charles County had the choice of supporting their child at home for life or placing them in an institution for their educational careers."

Community Living, Inc. (CLI) was established in 1978 to develop and coordinate needed services for people with dis-

abilities in St. Charles County. Its programs and services promote growth and independence while helping people with disabilities become active, contributing members of the community. CLI is funded in part by a grant from the Developmental Disabilities Resource Board of St. Charles County.

Established in 1959, Boone Center, Inc. (BCI) is a not-for-profit, nationally

...the abundance of professional agencies in St. Charles County are making a real difference in the community.



Graduates of Respond Right Academy

Community Living



accredited work center offering productive and fulfilling employment opportunities for adults with disabilities. BCI's vision is to be the preferred choice in St. Charles County for employment opportunities for people with disabilities.

A few of the other community disability agencies include Children's Home Society of Missouri, Crider Center, Delta Center for Independent Living, Emmaus Homes and Willow's Way Inc.

Family Support Services (FSS) serves developmentally disabled teens and adults. FSS offers a variety of programs such as Teen Recreation, where teens attend an after school teen club, school break camps and weekend recreational opportunities.

The LEADD program (Learning Experiences for Adults with Developmental Disabilities) is a cooperative effort by FSS, Emmaus Homes, Inc., and Lindenwood University to offer non-credit adult continuing education for ages 16 and older to teach independent living skills and provide life-enhancing experiences.

Founded in 1974 as a youth shelter, Youth In Need has evolved into a multi-service agency serving children, youth and families throughout eastern Missouri. Their services include residential treat-

ment programs, community programs, drop-in centers, early childhood programs, education for shelter youth and counseling.

The Community and Children's Resource Board administers the Community Children's Service Fund which is supported by an 1/8-cent sales tax passed by county voters in 2004. The funds are dedicated for services to St. Charles County youth and are awarded to local agencies to provide services that address the growing unmet mental health needs of the community.

The Developmental Disabilities Resource Board is a public taxing entity that enters into funding contracts with local agencies to provide community based programs and support for St. Charles County citizens with developmental disabilities. Celebrating 32 years in operation, the DDRB distributed over \$8 million to 31 agencies. Services include adaptive equipment, early intervention, respite, adult day programs, supported and sheltered employment, residential services and more.

Our Lady's Inn-St. Charles, located in the Defiance area, is an emergency care shelter for pregnant women in crisis, helping them choose life for their unborn child. Along with their parent location in St. Louis, the shelter has provided care and counseling to nearly 4000 homeless, pregnant women and their children. Our Lady's Inn-St. Charles has been in operation for over three years.

From responding to life-threatening emergencies to enhancing the quality of life for those in need, the abundance of professional agencies in St. Charles County are making a real difference in the community.

dial 2-1-1
find the help you need
www.211missouri.org
United Way

Show Me
AQUATICS & FITNESS®
636-896-0999
www.showmeaquatics.org
Providing adaptive water and land-based exercise and therapeutic programs to people living with a physical challenge in an environment that is as accommodating, accessible, and barrier-free as possible.

**Building Connections...
Creating Community**

**Promoting civic engagement
through volunteerism**

**Providing community
networking opportunities**

**Supporting initiatives that end
hunger and homelessness**

call 636-936-8023 or visit
www.communitycouncilstc.org

**COMMUNITY
COUNCIL**
ST. CHARLES COUNTY

Community Networking Forum sponsored by Community Council St Charles

