



BC's restaurant



Mid Rivers Mall



SHOPPING DINING & lodging



Historic
Main Street

One of the new shopping trends making its mark in St. Charles County is the emergence of “lifestyle centers” which combine trendy, upscale outdoor shop centers with urban styling, green space, and quick access parking.

Although several of these new mixed use centers are in the planning stages in St. Charles and Dardenne Prairie, the first one to recently open was The Meadows in Lake Saint Louis, developed by Davis Street Land Co. Located at Highway 40/I-64 and Lake Saint Louis Blvd., the first phase of this premier center includes retailers like Talbots, Chico’s, Ann Taylor Loft, Coldwater Creek, Banana Republic, Aeropostale, Bachrach, Jos. A. Bank and Backwoods Outdoor Goods and Clothing. In addition, a Von Maur Department Store is under construction and this 130,000-square-foot, two-level anchor is slated to open in fall 2010.

“Now in its second year of setting a new standard in the community, The Meadows is winning a lot of rave reviews from excited shoppers and diners because of the unique lifestyle experience the center offers in St. Charles County,” said Lake Saint Louis City Administrator Paul Markworth.

Meanwhile a new destination point is on the drawing boards in St. Charles on Interstate 70 and S. Fifth Street where a Noah’s Ark restaurant and hotel stood as a local landmark for the last 40 years.

To be called the Streets of St. Charles, Cullinan Properties is planning to turn this 26 acre site into a new urbanism center with up to 500,000-square-foot of retail, office and residential components.

Excitement in the community is also growing for the proposed \$1.5 billion Harbor San Carlos development that will overlook the Missouri River from Interstate 70 southward to Highway 364 in St. Charles. Plans for this 300-acre project include a hotel, shops, restaurants,

Major Retail Chains in St. Charles County



- American Furniture Electronics & Appliances
- Barnes & Noble
- Bed Bath & Beyond
- Best Buy
- Borders
- Costco
- Gordmans
- Hobby Lobby
- HomeGoods
- Home Depot
- Kohl's
- Lowe's
- Marshalls
- Michaels
- Office Depot
- Office Max
- PETCO
- PetSmart
- Sam's Club
- Sports Authority
- Target
- Toys R Us
- Ultimate Electronics
- Wal-Mart



condominiums, pedestrian trails, marina and boating access between the shore and Bangert Island, a St. Charles County park.

The flagship of shopping centers in St. Charles County has long been Mid Rivers Mall at Interstate 70 and Mid Rivers Mall Drive in St. Peters. This regional mall is home to over 150 retailers and is anchored by Dillards, JCPenney, Macy's, Sears, and a Dick's Sporting Goods. With a colorful food court and more than 10 eateries, sit-down restaurants such as Max & Ermas Restaurant & Bar, Chili's Grill & Bar and Ruby Tuesday, this popular landmark is also home to a 14 screen Wehrenberg Theatre and Borders Bookstore. A Best Buy is located on the surrounding Mall campus.

Equipping fishing and hunting enthusiasts alike, the St. Louis region's only Bass Pro Shop is located off I-70 in St. Charles. With more than 23,000 acres of public parkland throughout St. Charles County, Bass Pro stays busy 365 days a year offering equipment and clothing for hiking, backpacking, footwear, wildlife viewing, camping, outdoor cooking, electronics and more.

"The retail diversity we all enjoy in St. Charles County has been fueled by the tremendous residential growth that the area has been enjoying the last few decades," said Bob Swank, director of economic development for the city of Wentzville. "Residents enjoy having lots of shopping conveniences close to home and the importance of shopping locally is something many in the community understand."



Historic Main Street in St. Charles

Founded in 1769, the Historic Main Street in St. Charles is a 10-block national registered historic district with over 125 one-of-a-kind shops, three museums and the Ameristar Casino. Community events and festivals are held almost weekly in this popular destination and attract millions of visitors from around the world.

SHOPPING & DINING & Lodging

Some of the unique and trendy shops here include those with an international flair such as The English Shop, the Thistle and Clover, and European Accent. Others include the Amish Peddler, the Glass Workbench, First Capitol Trading, Canine Cookies N Cream Dog Bakery, Figuero's Coffee & Gourmet Specialties, Laura's LaPetite,

Fans of antiques will also fall in love with outlets around town: St. Charles Antique Mall on Highway 94, Cottleville Antiques & Books on Highway N, Country Korner in north Town O'Fallon and New Melle Antiques & Tea Room west of Highway 40/I-64. Or browse more than 300 open air booths at the Wentzville Flea Market held year-round every Sunday morning at the Wentzville Community Club.

Eating Out St. Charles County-Style

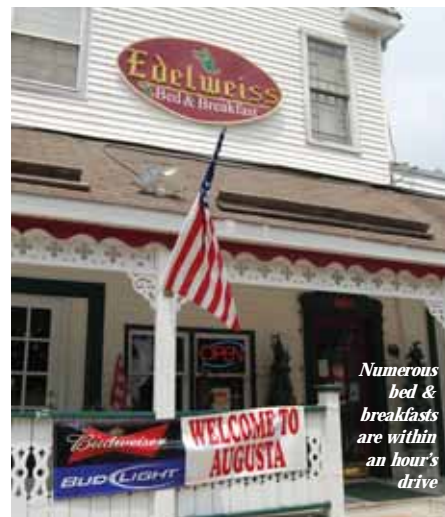
Whatever the occasion, craving or budget, local residents and guests will find plenty of mouth-watering options and distinctive flavor on the menu, thanks to the many award-winning establishments.



Mid Rivers Mall

In fall 2009, St. Louis Magazine named BC's Kitchen in The Meadows in Lake Saint Louis the "Best of the Best New Restaurants of 2009." The award is an exclusive recognition given to a single restaurant whose cuisine, service and atmosphere exceeds all contenders. With its sophisticated atmosphere to a menu of eclectic and traditional fare, BC's is setting a new standard in St. Charles County.

The region's newest addition to the Underground Restaurant movement can be found at the Stone Soup Cottage in historic Cottleville. With traditional seating for only 25, reservations are always



Numerous bed & breakfasts are within an hour's drive



Twilight shopping at the Meadows

required at this charming venue that is open only a few evenings a week for four and six course tasting menus. Champagne Brunch is served Sunday mornings.

To breakaway from the traditional, visit Kitaro-Bistro of Japan at Highway K in O'Fallon. With a unique dining experience and contemporary atmosphere, enjoy upscale but affordable specialty entrees including Japanese steak, seafood, sushi and limitless creation dishes.

From serving warm biscuits hot off the pan to its full service bar, Bristol's Bar & Grill in WingHaven offers diners the freshest seafood dishes in a posh yet comfortable atmosphere.

Among the many popular eateries in Historic St. Charles are the Mother-in-Law House Restaurant with its quaint ambience, Little Hills Winery & Restaurant, Lewis & Clark's, The Trailhead Brewing Co., Picasso's Coffee House, Magpies, and Frankie Tocco Pizzeria for great Italian cuisine.

For great atmosphere and a happening late night, Blue Sky Café in O'Fallon has become the local industry hangout. With a spacious dining room, Blue Sky Café has creative Midwest dining that keeps customers coming back for more. Or for the European pub experience, try Seamus McDaniels or McGurk's Irish Pub.

Sampling of Eateries in St. Charles County

National Restaurants

- Applebee's
- Bob Evans Restaurant
- Cracker Barrel
- Denny's
- Domino's
- Macaroni Grill
- McDonald's
- O'Charley's
- Olive Garden
- Panera Bread Company
- Pizza Hut
- Steak n' Shake

Other Unique Dining Venues

- Bristol Seafood Grill
- Culpepper's
- Donotelli's
- Erio's Ristorante
- Grappa Grill
- Magpie's
- Miss Aimee B's



McGurk's Public House

- Fratelli's
- Imo's Pizza
- Madison's Cafe
- Maxwell's Bar & Grill
- McGurk's Public House
- Pearl's Oyster Bar
- Pio's
- Quintessential
- Timber Creek Grill
- Tony's on Main
- Vivian's Vineyard
- Winery of the Little Hills

Other Hotels

Wingate Hotel



- Best Western
- Comfort Inn & Suites
- Days Inn
- Drury Inn
- Econo Lodge
- Extended Stay America
- Fairfield Inn by Marriott
- Hampton Inn
- Hilton Garden Inn
- Holiday Inn Express
- Quality Inn and Suites
- Ramada
- Red Roof Inn
- Residence Inn by Marriott
- Sleep Inn & Suites
- Staybridge Suites
- Super 8 Motel
- Travelodge



Bristol Seafood Grill

There's a hotel room for every occasion - whether it's to house visiting family members, an extended business trip or a night's stay during a long road trip.

Hotels and B&B's

For those only visiting St. Charles County, there is abundant lodging and hospitality services aimed for everyone from vacationers to long-term business travelers.

The largest luxury hotel in the area is the 24-story Ameristar Casino Resort Spa that opened in early 2008 with 397 luxurious suites, a 7,000-square-foot full-service spa, an indoor/outdoor pool area with landscaped grounds and waterfalls.

Modern elegance and first-class amenities abound at the John Q. Hammons Embassy Suites in St. Charles. This 12-story hotel offers 296 suites and is attached to the St. Charles Convention Center and has a full-service "Spa Botanica" day spa.

Overlooking the 9th hole of the Missouri Bluffs Golf Course, a brand new, 100-unit Wingate Hotel is now the newest tenant and exclusive hotel in the Missouri Research Park along Highway 40/I-64 near Weldon Spring.

Some Bed and Breakfasts in St. Charles County



- Anchor Mill Inn
- Augusta Lindenhof B&B
- BitterSweet Inn
- Boone's Lick Trail Inn Bed & Breakfast
- Das Gast Haus Nadler
- The Doll House Bed & Breakfast
- Elm Tree Inn
- Elysian Fields Bed & Breakfast
- The Geery's Bed & Breakfast
- H.S. Clay House
- Koeller Bed & Breakfast
- Lococo House II Bed & Breakfast
- The Mueller House
- Raines Victorian Inn
- Victorian Memories Bed & Breakfast

Romantics and history buffs alike can also take their pick from dozens of cozy and unique bed and breakfasts found all around the community.

The H.S. Clay House Bed and Breakfast and Guest Cottage in Augusta was named one of the region's "Top Three Most Romantic Places" by the St. Louis Business Journal. Built as a family residence in 1885 by Dr. Hampson Strother Clay, this delightfully decorated and painstakingly resorted residence draws guests from around the world and has been featured in Midwest Living and Southern Living magazines.

Or enjoy fine lodging in Historic St. Charles at the Boone's Lick Trail and Inn. Overlooking the Missouri River since the 1840s, this federal style building has been lovingly owned and operated by the Mydler family since the 1980s.

"From locally owned restaurants, shops and hotels to regional and national chains, St. Charles County has just about everything a person would want or need," said Scott Tate, president and chief operating officer of the St. Charles Chamber of Commerce. "We offer something for everyone including festivals, art, history, nightlife, shopping and dining."

A New Style of Dining

- Tapas Menu • Patio Dining • Private Parties
- Rehearsals • Small Weddings • Catering

Serving Lunch Daily 11-3

903 S. Main • Historic Old St. Charles
636.947.3883
www.magpiesstcharles.com

- Famous Burgers
- Sandwiches
- Homestyle Dinners
- Ribs
- Seafood
- Pizza • Steaks
- Appetizers
- Happy Hour

Breakfast, Lunch & Dinner Daily

1215 S Duchesne • St. Charles 63301
(636) 946-3500
www.dinejjs.com