



830 Westwood Industrial Park Dr.

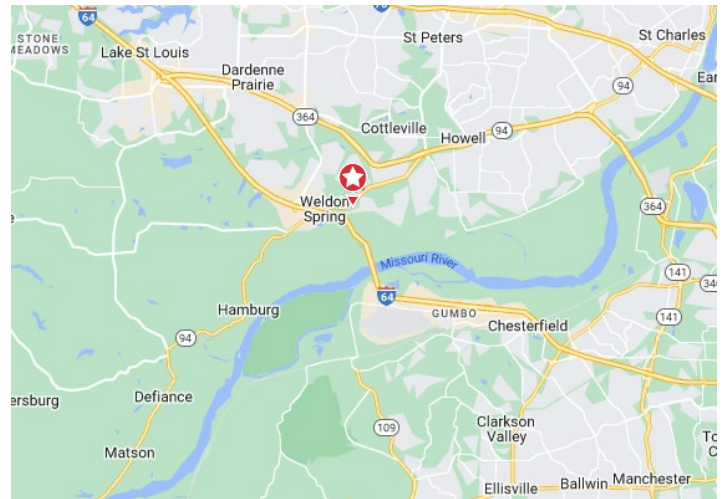
Weldon Spring, MO 63304

Property Features

- 7,148 SF Office Space (approx 4,000 SF on 2nd Floor)
- 49,218 SF Warehouse
- 24' Clear Height
- Wet Sprinklered
- 480, 277 3-Phase (Heavy Power)
- 2 Truck-High Loading Docks
- 2 Large Drive-In Doors
- Built in 1999
- New TPO Roof in 2016
- Easy Access to I-64
- 2.59 Acres
- Tenant in Place until 8/31/24

Sale Price:

\$7,600,000

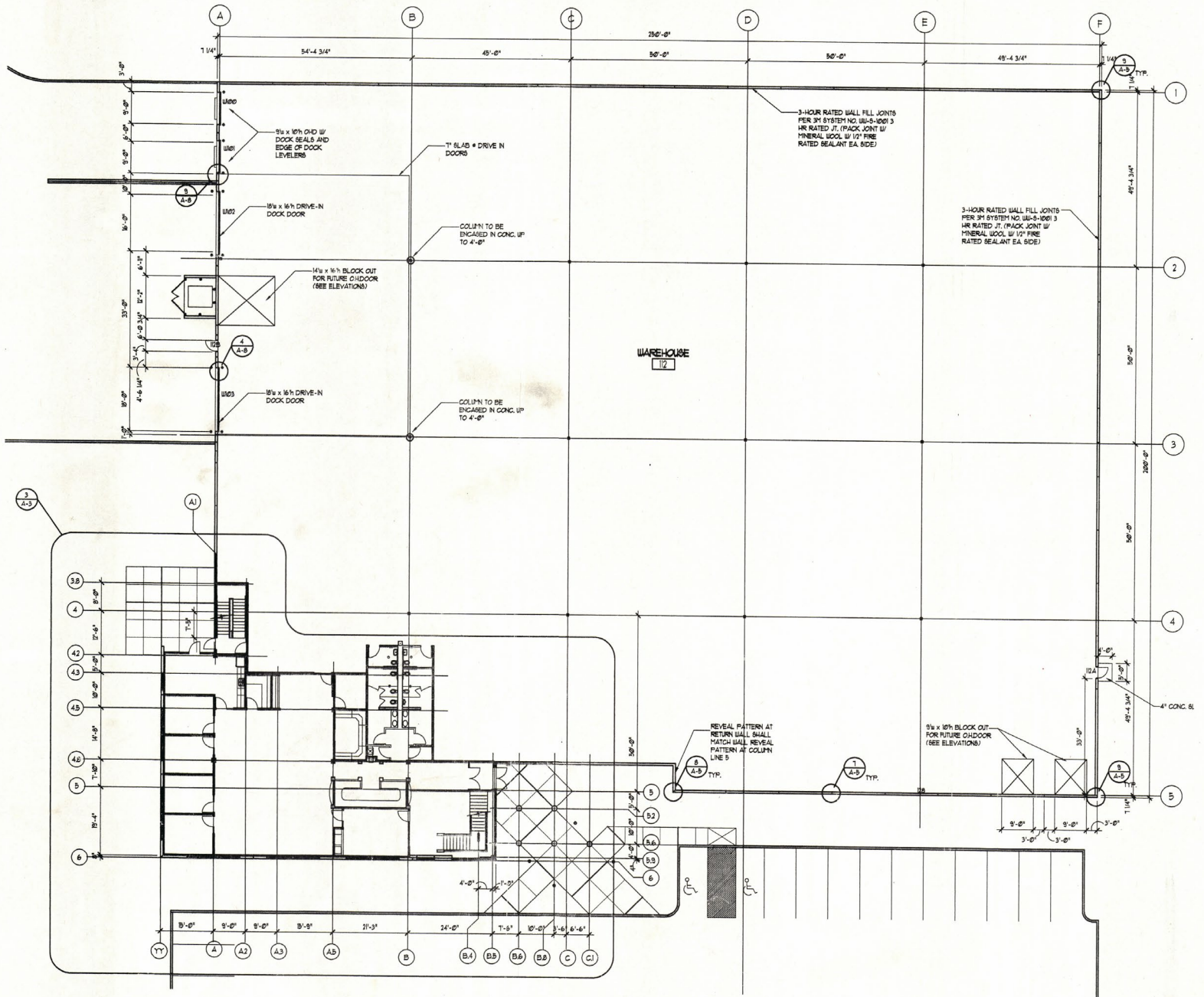


For more information:

Kevin McKeon, CCIM

314 994 4287 Direct • 314 517 6739 Mobile
kmckeon@naidesco.com

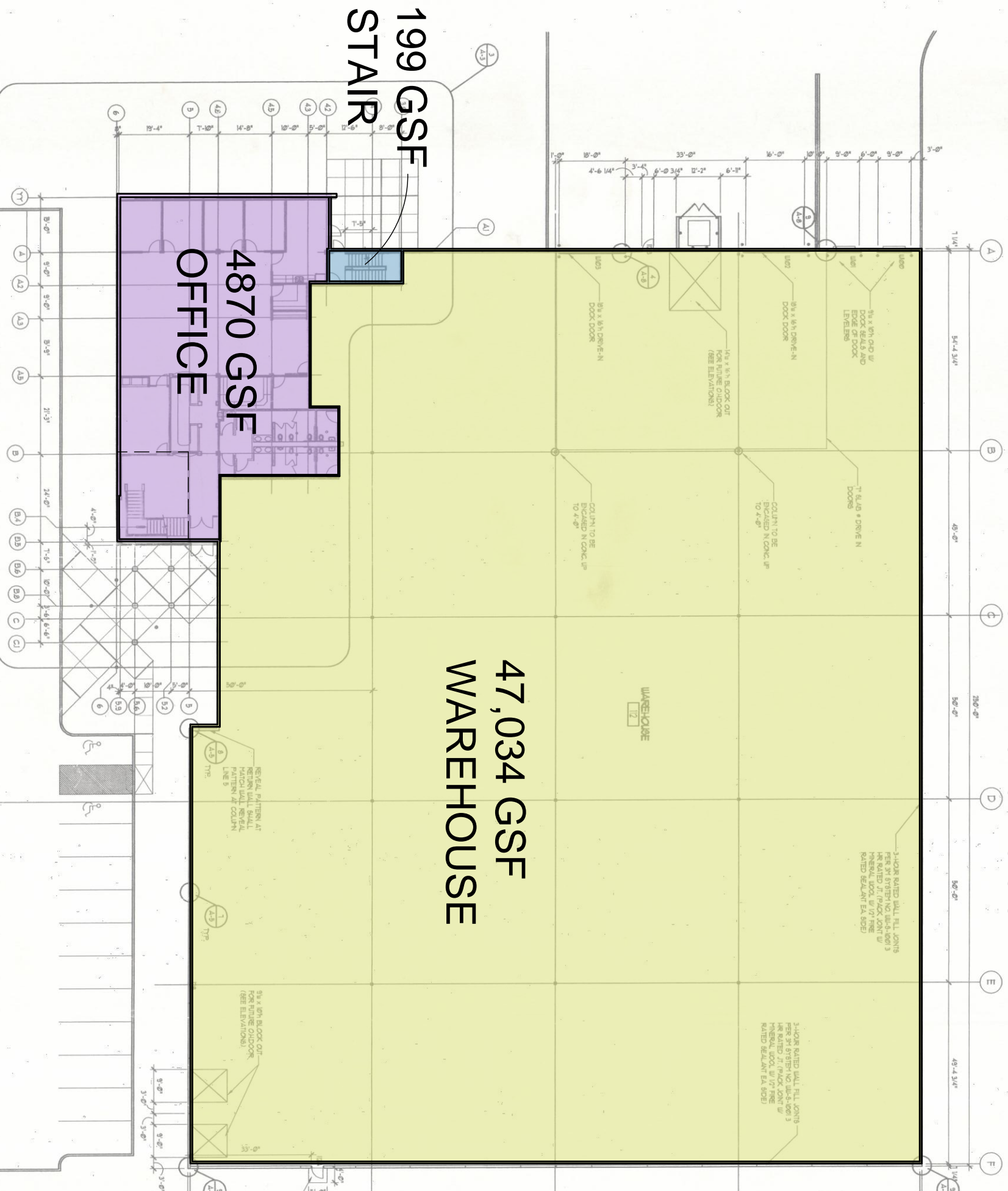
Floor Plan



1 FLOOR PLAN
A-2 1/16" = 1'-0"



52,103 TOTAL GSF
MAIN LEVEL BUILDING GROSS

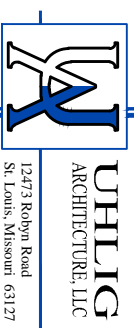


Main Level

1/32" = 1'-0" (11x17 Sheet Size)



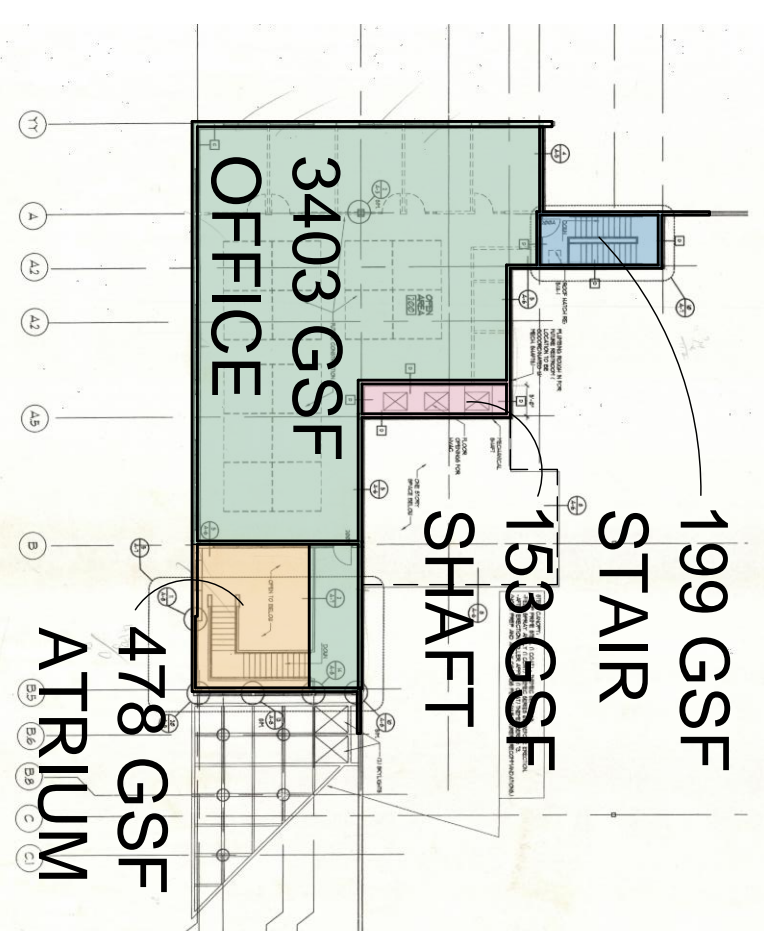
830 Westwood
Industrial Park Drive



12473 Robby Road
 St. Louis, Missouri 63127
 314.713.3255 call
 call@uhligarchitecture.com

1-3-22

4233 TOTAL GSF
EXTENTS OF MEZZANINE



Mezzanine Level

1/32" = 1'-0" (11x17 Sheet Size)



Interior Photos



Interior Photos

